

Omni Antenna

HILINKS

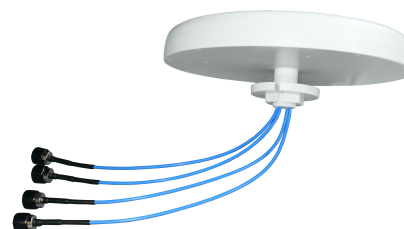
970011X3

698-960MHz

1710-2700MHz

3300-4000MHz

- 698-960/1710-2700/3300-4000MHz
- Compact size and light weight
- Easy to be installed, Ceiling Mount
- High Gain, Low PIM
- Used in indoor



Technical Data

Electrical Specifications

Type No.	4 x N Female	97001153		
	4x4.3-10Female	97001163		
Frequency Range (MHz)		698-960	1710-2700	3300-4000
Gain (dBi)		3.5	4.0	4.5
Isolation(dB)		≥15	≥20	≥22
VSWR		≤2.0	≤2.0	≤2.0
Horizontal Beamwidth (°)		360		
Vertical Beamwidth (°)		90	46	38
Polarization		Linear H/V for each Radiator		
PIM3 (@2x43 dBm Carrier) (dBc)		≤-153		
Input Power (W)		≤50		
Impedance (Ω)		50		
Lightning Protection		DC Ground		

Mechanical Specifications

Dimensions (excluding connectors and mounting bracket) (mm)	Ø320x50
Packed Dimensions,mm	380X110
Weight (including connectors and mounting bracket) (kg)	1.0
Mounting Method	Ceiling Mount
Radome Material	ABS(UV Stabilized)

Environmental Specifications

Operational Temperature (°C)	-40°C to +65 °C
Relative Humidity	5%-95%